

## AN OUTSTANDING LINE OF **EAGLE** DIFFERENTIAL AND SETPOINT CONTROLLERS FOR THE SOLAR INDUSTRY

### EAGLE 2 DIFFERENTIAL CONTROLLER



HARD WIRED AND LINE CORDED MODELS AVAILABLE

#### MAIN FEATURES

- **Microprocessor** accuracy and dependability with ambient operation from -10 to 120°F
- **Large easy-to-read 40 character** (20x2) backlit LCD display showing every parameter measured and controlled by the microprocessor.
- **PC DATA PORT** with built-in transmitter allows optional adapter and up to 500 ft. cable to interface with computers for ease in startup and remote diagnostics. Or, for adding an **Optional large 80 character** (4x20) backlit LCD display. Remote-mount up to 150 ft. distances with a CAT-5 cable.
- **Long-term diagnostics** and data logging is possible using communications software that is included in Windows' OS.
- **Fault LED indicators** for quick servicing and diagnostics
- **Fast and easy** installation with "screwless" sensor terminals and easy access for all other wiring
- **Electrostatic** discharge protected
- **One HP or 20 AMP** high reliability relay
- **Polyester coated 16 gage** rugged steel enclosure
- **Model available** with receptacle & power cord or with 1/2" conduit holes for higher current permanent wiring

### EAGLE 2- DC DIFFERENTIAL CONTROLLER



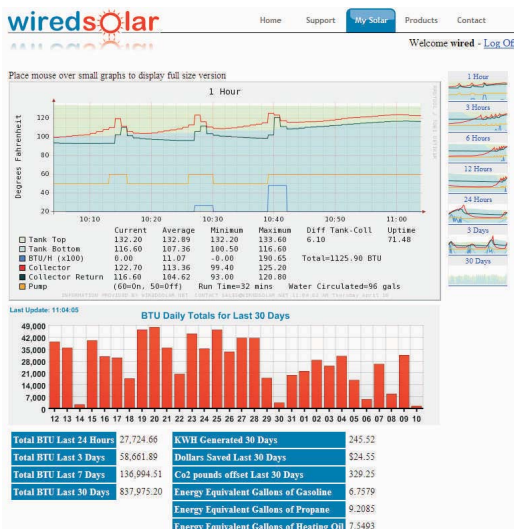
EAGLE 2- D1 & 2 are DC OPERATED CONTROLLERS available for "12VDC" BATTERY operation or from direct "PV" PANELS. RELAY OPTIONS are from 6 AMPS to 30 AMPS. Power consumption is 1.5 watts for model D1 and 25 milli-watts for model D2

### EAGLE 2 SETPOINT CONTROLLER



EAGLE 2 SETPOINT CONTROLLER is an excellent companion to the differential controllers for space heating applications. It is also intended for use as a HI/LO LIMIT ALARM in SUPERVISORY CIRCUIT APPLICATIONS.

### EAGLE 2 WEB DIFFERENTIAL CONTROLLER

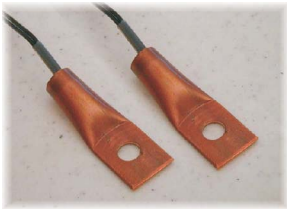


EAGLE 2 WEB has built-in ISOLATED SERIAL INTERFACE designed for DIRECT INTERFACE to the INTERNET. TEMPERATURE TRENDS, PUMP ACTIVITY AND BTU TOTALIZING are presented in neat GRAPHICAL FORM. Records are kept in HOURS, DAYS, WEEKS AND MONTHS for later viewing.

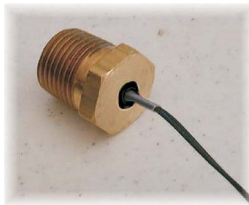
## ACCESSORIES



**LCD MASTER DIGITAL DISPLAY PANEL: SOLR-RD80**  
 Displays temperature and status indication with 80 characters (4x20) 1/4" high. Connects directly to the EAGLE controller Data Port.



Bolt-on style: SOLR-TS02



Screw-in style: SOLR-TS03  
 1/2-NPT threaded plug



Immersion style: SOLR-TS04, 05  
 4" or 8" long with 1/4 or 1/2-NPT fitting

### **THERMISTOR TEMPERATURE SENSORS RATED TO 400°F:**

## IMPORTANT NOTES

Please visit [www.imcinstruments.com](http://www.imcinstruments.com) for a complete listing of individual BROCHURES in PDF form for all of our products. In addition, there are installation notes and various technical aids to assist the installer in completing SOLAR INSTALLATIONS SUCCESSFULLY.

**COMING SOON..... Dual Relay TWO ZONE controllers for applications such as DIFFERENTIAL and HEAT DUMP CYCLES for pressurized and evacuated tube collectors, DIFFERENTIAL and SPACE HEATING combined cycles with independent storage, and much more.**

**ALSO SWIMMING POOL SOLAR Controls for INDOOR and OUTDOOR swimming pool applications. Both systems will include REMOTE SET POINTS and SYSTEM STATUS DISPLAYS.**

**IF YOU WOULD LIKE TO BE IN OUR MAILING LIST, PLEASE SEND A BRIEF EMAIL TO:**  
 sales@imcinstruments.com

**WITH YOUR REQUEST, WE WILL EMAIL UPDATES AS SOON AS THEY BECOME AVAILABLE.**